



PRACTICE MANAGER MEETING

TUESDAY MARCH 15TH 2016 NOON – 1:00PM

Instructions to join the meeting remotely:

- 1. Open a web browser and enter URL: www.readytalk.com
Enter participant access code: 2093166**
- 2. Phone in for the audio portion of the conference:
1-866-740-1260 - then enter the access code: 2093166**

MEETING HANDOUTS:
www.cchap.org/pmmeeting



PRACTICE MANAGER MEETING
TUESDAY MARCH 15TH 2016 NOON – 1:00PM

Population Health

PRESENTER

Arthur E. McFarlane II
Population Health Analyst
Children's Hospital Colorado

MEETING HANDOUTS:
www.cchap.org/pmmeeting

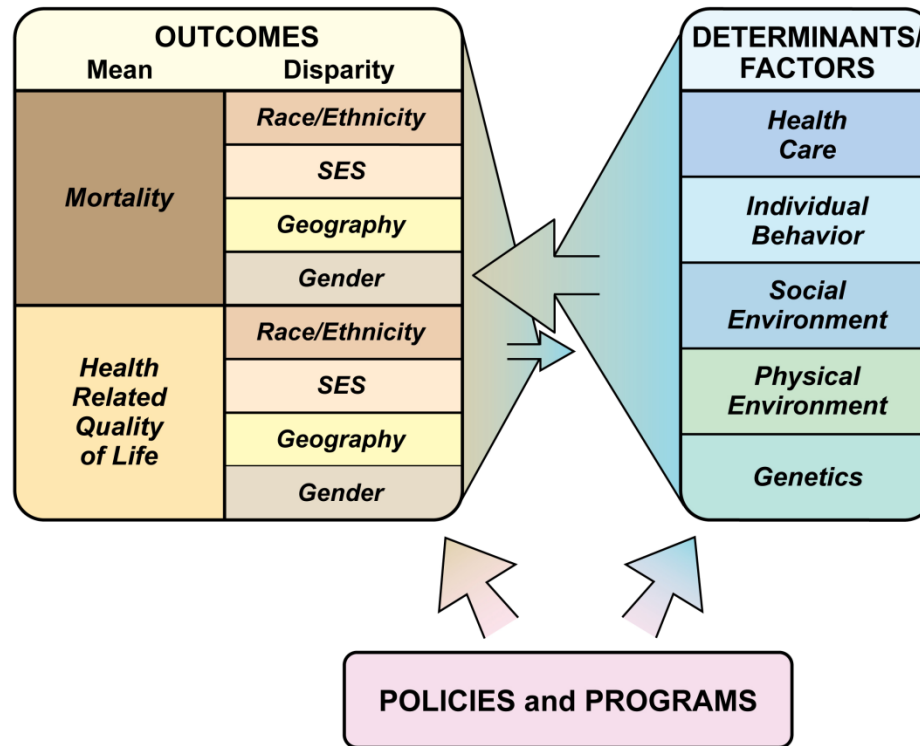
POPULATION HEALTH

WHAT IS IT AND WHERE DO I FIT?

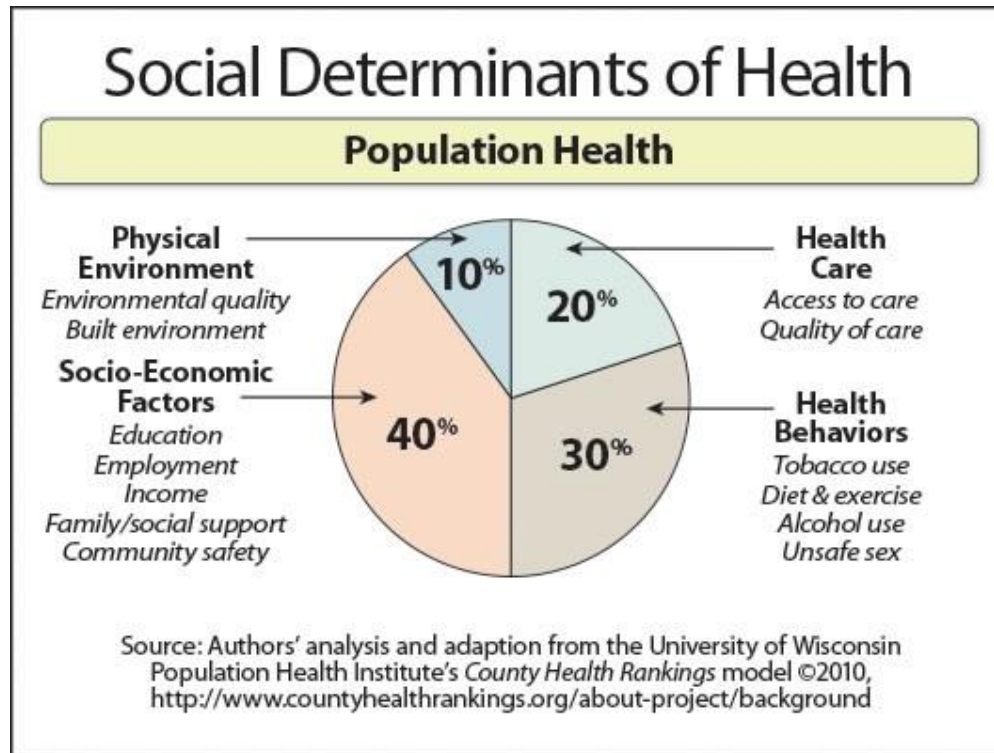
ARTHUR MCFARLANE II

POPULATION HEALTH ANALYST AND COMMUNITY OUTREACH COORDINATOR
- CHILDREN'S HOSPITAL COLORADO

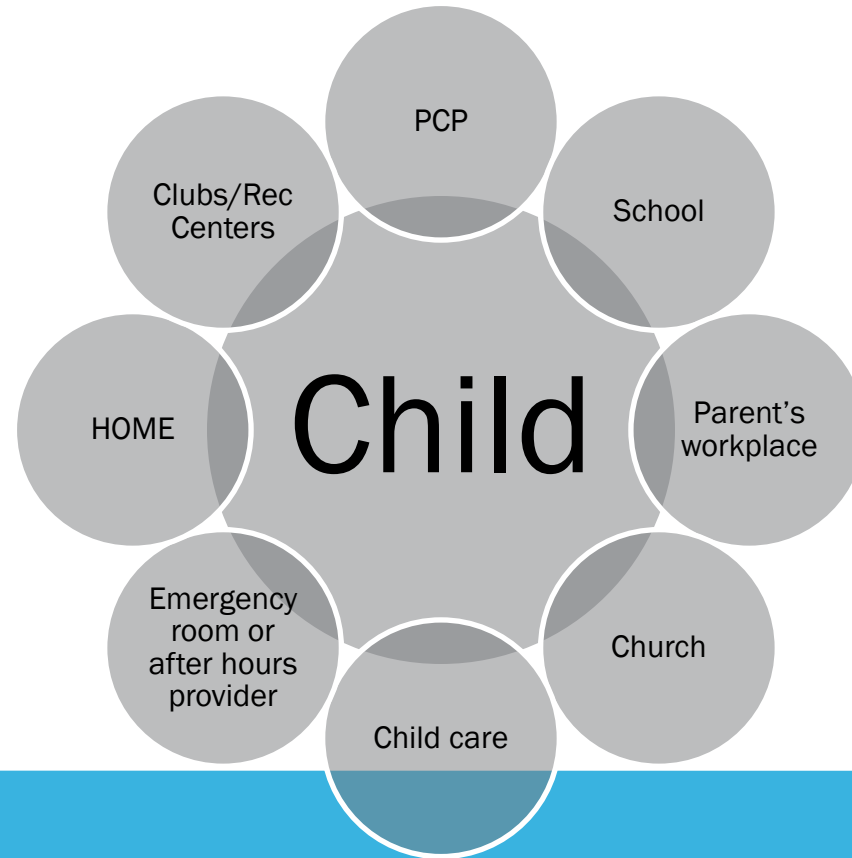
WHAT IS POPULATION HEALTH?



WHAT ARE THE SOCIAL DETERMINANTS OF HEALTH?



WHAT DOES POPULATION HEALTH LOOK LIKE LOCALLY?



HOW IS POPULATION HEALTH DONE?

- Identify community
- Build partnerships
- Gather health needs data in the community
- Assess community health assets from data
- Assess community health gaps from data
- Collaborate on improving assets
- Collaborate on addressing gaps
- Develop a whole, well-child approach
- What else would you suggest?

WHAT CAN PROVIDERS DO?

- **Play a critical role**
 - connecting those involved in their patients' care
 - assuring the quality of life for patients
 - helping patients closely manage multiple chronic diseases
 - assuring patients are educated about unhealthy behaviors
- **Have strategic conversations**
- **Collaborate with community health partners**
- **Collaborate with community SDoH partners**
- **Suggestions/Thoughts?**

DISCUSSION/QUESTIONS